



MERCEDES 1846

Stake body and tarpaulin truck (Trucks)

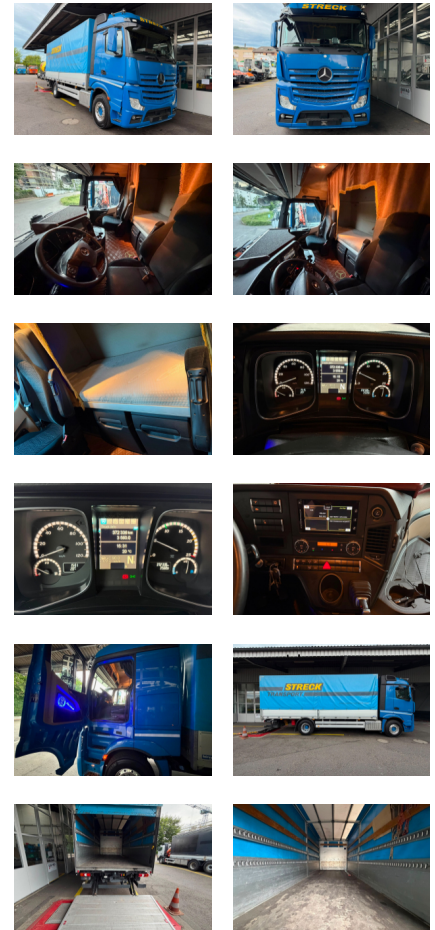
Price	Price on request
Make	MERCEDES
Type	1846
Chassis	Stake body and tarpaulin truck
Chassis remarks	Brücke mit Verdeck und Hebebühne
Category	Trucks
1. Registration	19.10.2018
Mileage	372'400 km
Vehicle condition	very good
Latest VLA	17.06.2025
Internal number	4723
Emission standard	EURO 6
Fuel	Diesel
General remarks	ABS, Klima, Tempomat, Retarder, Anhängerkupplung EU Bremse
Total weight	18'000 kg
Payload	8'090 kg
Cargo length	7'100 mm
Cargo width	2'430 mm
Cargo height	2'450 mm
Power	335 kW
Cylinder	6 Cylinder
Cubic capacity	10'677 cm ³
Drive	4 x 2
Suspension	Blatt-Luft
Transmission	Automatic
Tyre condition axis 1	50 %
Tyre condition axis 2	50 %
Driver cab type	Fernfahrerhaus
Driver cab remarks	2 Plätze + 1 Bett
Tail lift	Yes

Dealer Information



BAFAG AG
Trockenloostrasse 61
8105 Regensdorf

+41 44 840 06 60
+41 76 588 06 60
info@bafag-trucks.ch
<https://www.bafag-trucks.ch>



Tail lift remarks

Dautel 1500KG, Plattformhöhe
1600mm

